
Product List for:

Oil Spill Response, Remediation, and Contaminated Water Filtration



AFX Absorber:

Peat-based Absorber for 1) Oil Spill Response, 2) Ground Remediation, 3) Refill for Filters

AFX Absorber, a granular Swedish Peat, is an excellent resource *for treating oil spills on bodies of water and for use in soil remediation*. It can be applied directly to affected areas of soil. This peat is the main filtration media in all Axon Filters. *This 100% natural, hydrophobic Absorber is superior at trapping oil, diesel, petroleum, solvents and heavy metals*. This Peat comes in the following sizes:

Absorber 30 liter Bag approximately 12 kg

Shipped in quantities of 27 bags on Pallet



Absorber 1600 liter Bag approximately 640 kg

Shipped in one large bag on Pallet



Axon Filter System AMF:

Underground Oil/Water Separator and Contaminated Water Purification

The Axon AMF is the underground system. This version can be utilized near filling stations, transformer pits, and any other facility that requires the collection and filtration of oil, petroleum and metals from water. This system requires a collection apparatus, which feeds the contaminated water into the filter. It also requires an outlet, where the water can be released into a drain, stream, etc. These systems are often paired with a drain well with pump and oil alarm that easily indicates when the Absorber has been saturated. We provide all necessary devices that may be needed to get your system set up. Once implemented the Axon AMF is incredibly easy to monitor and maintain; Set it and forget it!

Axon - AMF 600

Number of Peat Cassettes: 4 + 1
Flow capacity: 400 GPH/ 6.66 GPM (1.5 m³/ hour)
Absorber Volume: 12 Gallons/ Cassette
Total Absorber Volume: 48 Gallons (6 Bags)
Absorption Capacity: 24 Gallons
Diameter well: 23.63 inches
Diameter cassette: 22.84 inches
Height: 74.81 inches
Dimension in and outlet: 4.4 inches



Axon - AMF 800

Number of Peat Cassettes: 4 + 1
Flow capacity: 820 GPH/ 13.66 GPM (3.1 m³/ hour)
Absorber Volume: 16 Gallons/ Cassette
Total Absorber Volume: 64 Gallons (8 bags)
Absorption Capacity: 32 Gallons
Diameter well: 31.50 inches
Diameter cassette: 30.71 inches
Height: 74.81 inches
Dimension in and outlet: 4.34 inches



NordTech Consulting & Trading Company, Norra torangsvagen 38, 612 42 Finsping - Sweden

Axon Filter System AMFI:

Aboveground Oil/Water Separator and Contaminated Water Purification

Axon Filter System is also available in an above-ground version. Application areas include workshops, industries, power stations, remediation sites, etc. These filters are called Axon AMFI and can be installed in a building or can be mobile, stored in our containers Axon AMC and Axon AMBT. Axon AMFI can be ordered in three different standard sizes. The larger the filter, the more flow capacity it can handle. It is therefore important in the planning stages to determine the flow capacity needed for the filter system. Axon AMFI can easily be combined with coarse pre-filters, oil-separator as well as other technical equipment specified according to need at the time of the order.

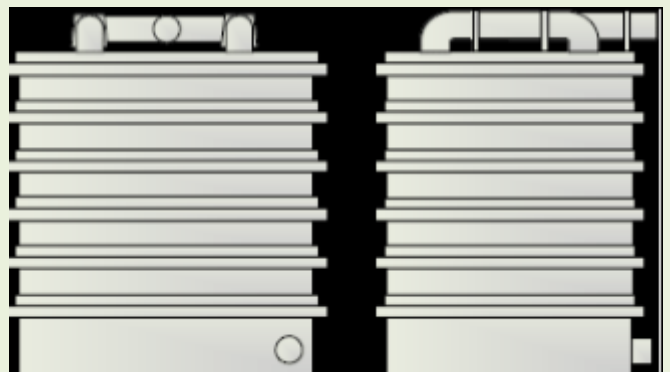
Axon - AMFI 500

Number of Peat Cassettes: 4 + 2
Flow capacity: 400 GPH - 1.5 m³/ hour
Absorber Volume: 10 Gallons/ Cassette
Total Absorber Volume: 40 Gallons (5 Bags)
Absorption Capacity: 20 Gallons
Length: 20.48 inches
Width: 20.48 inches
Height: 55.12 inches
Dimension in and outlet: 1.97 inches



Axon - AMFI 1200

Number of cassettes: 4 + 2
Flow capacity: 1900 GPH/ 31.67 GPM (7.2m³/ hour)
Absorber Volume: 40 Gallons/ Cassette
Total Absorber Volume: 160 Gallons
Absorption Capacity: 80 Gallons
Length: 43.31 inches
Width: 51.19 inches
Height: 58.27 inches
Dimension in and outlet: 4.34 inches



Axon - AMFI 1800

Number of cassettes: 4 + 2

Flow capacity: 4000 GPH/ 66.67 GPM (15 m³/ hour)

Absorber Volume: 88 Gallons/ cassette

Total Absorber Volume: 352 Gallons (44 Bags)

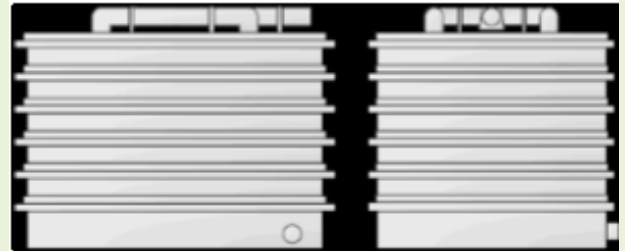
Absorption capacity: 176 Gallons

Length: 59.06 inches

Width: 74.81 inches

Height: 58.47 inches

Dimension in and outlet: 4.34 inches



NordTech Consulting & Trading Company, Norra torangsvagen 38, 612 42 Finsping - Sweden

Phone: +46122273337 / +46763188020

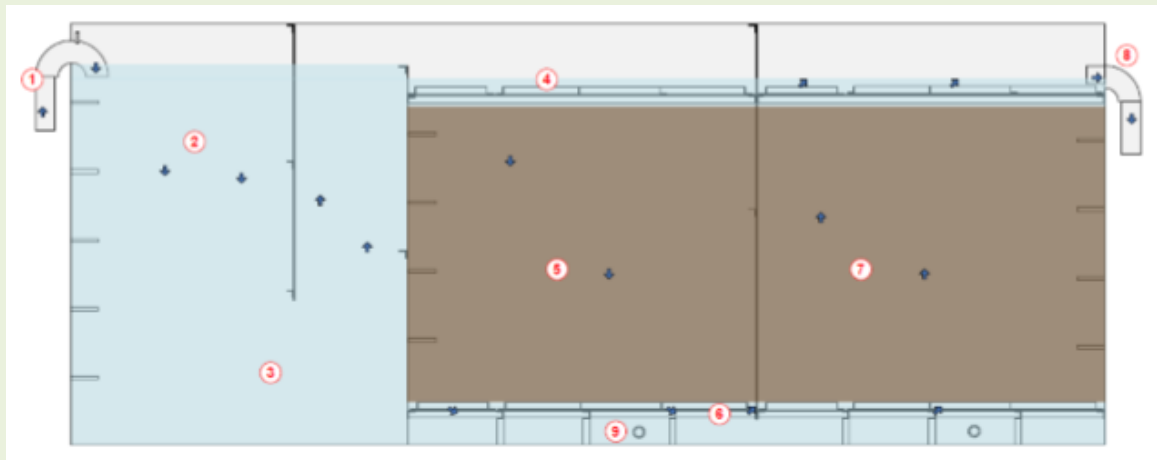
E-mail: ethio@nordtechconsulting.se

Website: www.nordtechconsulting.se

Axon MAXI and MAXA:

Mobile Roll-Off Oil/Water Separator and Contaminated Water Purification with Sedimentation Option

MAXI Filter - This mobile unit will allow for flow capacity up to 5300 GPH/ 88.34 GPM. They can be run parallel to reach whatever volume necessary. MAXI is a specially made roll-off sized container unit which enables the customer to have a mobile solution that can easily be transported. The MAXI consists of one unit that is divided into three parts. One or two parts for sedimentation separation and one or two parts for the absorber filter. The contaminated water enters at the top (1) where the water will flow down and any floating debris will stay in the first compartment (2). Heavier particles will stay at the bottom of this section (3). When this compartment is filled the water will then, free of debris, over-flow into the second compartment (4) where the water will run down through the first filtration stage (5) with AFX absorber. As it reaches the bottom, the water will run under the baffle (6) to enter the second filtration stage and rise through the absorber (7) to finally exit the unit at the top at the other end (8). At the top and bottom of each filtration stage, there is a perforated ceiling and floor enabling the absorber to stay in place during the filtration process.



Axon - MAXI

Length: 236.23 inches

Width: 102.37 inches

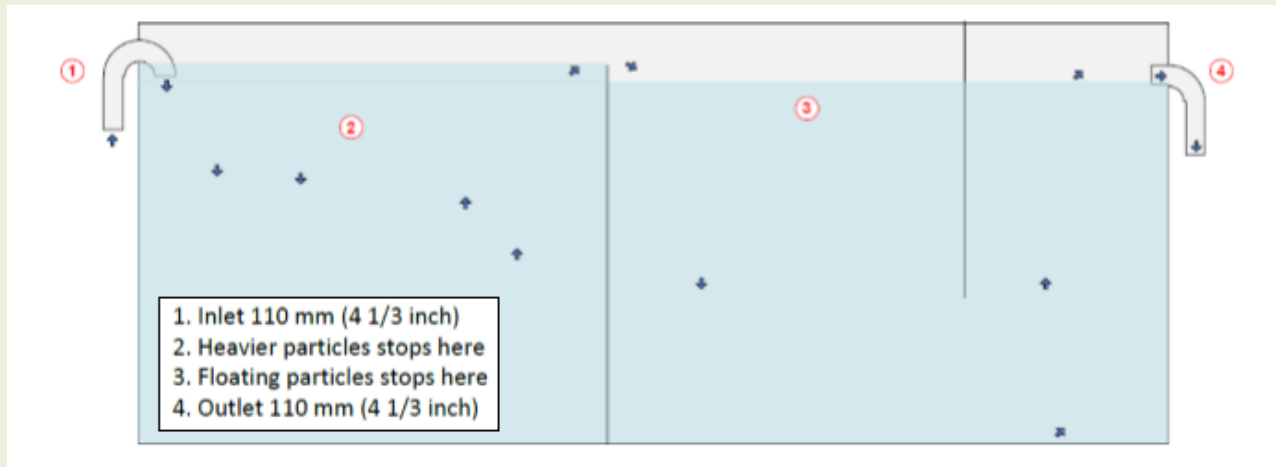
Height: 110.24 inches

Flow capacity: up to 5300 GPH/ 88.33 GPM (20 m³/ hour)

Amount of absorber approx. 12 m³ (6 m³ per filtration stage) Easy to install - only one inlet and one outlet

1. Inlet 110 mm (4 1/3 inch)
2. Floating Particles Stop Here
3. Heavier Particles sink to the bottom
4. Perforated Plate (same at top and bottom of filters)
5. Filter Compartment for up to 6 m³ of absorber
6. Perforated Plate
7. Filter Compartment for up to 6 m³ of absorber
8. Outlet 110 mm (4 1/3 inch)
9. Camlock 2" for flushing

MAXA Sedimentation - A roll-off sized container unit which enables the customer to have a mobile solution that can easily be transported. It consists of one unit where two compartments, the last one with a divider to catch floating debris, where each one is working to stop sediments from continuing. The contaminated water enters at the top (1). Heavy particles sink to the bottom (2) and the water continues to the second compartment where floating particles are stopped by the wall (3) and the water continues under the wall and out (4). The MAXA is often used as a precursor to the MAXI Filter, to ensure minimal sedimentation is allowed to enter the filtration process.



Axon - MAXA

Length: 236.23 inches

Width: 102.37 inches

Height: 110.24 inches

Flow capacity: up to 5300 GPH/ 88.33 GPM (20 m³/ hour)

Easy to install - only one inlet and one outlet

Very Similar to MAXI in appearance and design- with focus on sedimentation



NordTech Consulting & Trading Company, Norra torangsvagen 38, 612 42 Finsping - Sweden

Phone: +46122273337 / +46763188020

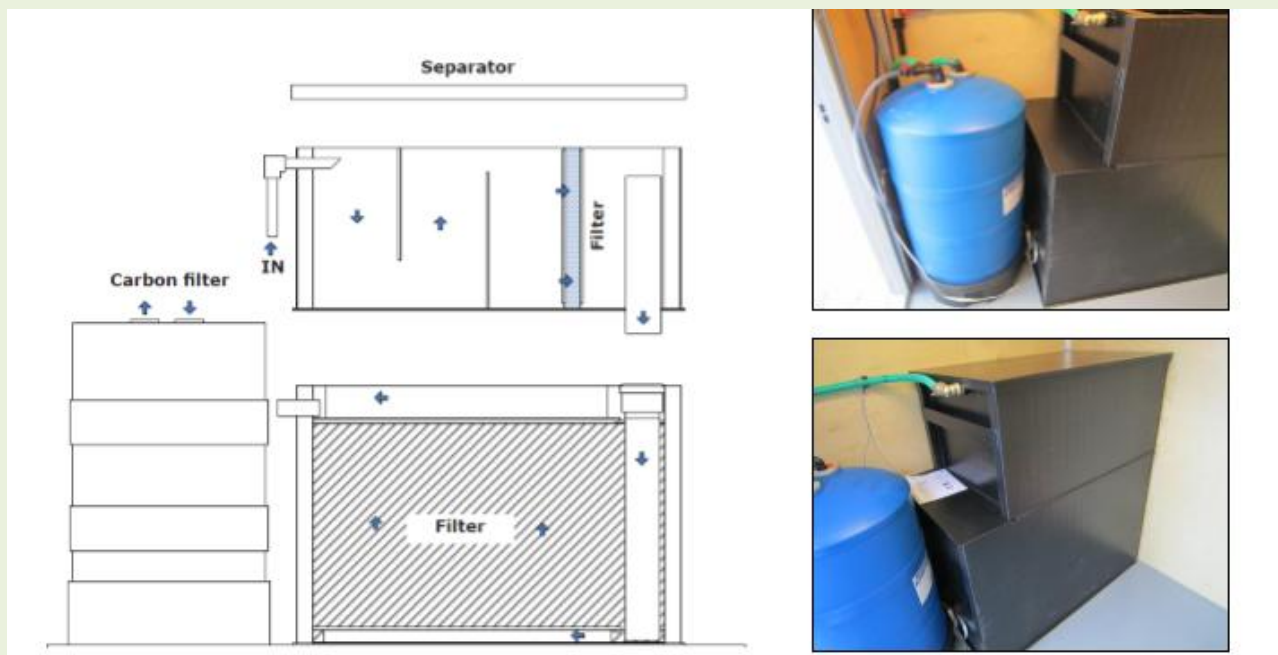
E-mail: ethio@nordtechconsulting.se

Website: www.nordtechconsulting.se

Axon Marine Filters:

Under Up Flow System for increased contact time with peat

Axon Marine Filters pump water from the bottom-up through the peat cassette in order to slow down the flow rate and increase contaminated water contact time with peat. This slower flow rate is ideal for polishing water that is contaminated with heavy metals, which can require additional time to become adsorbed into the peat. These systems are ideal for boat wash stations, marinas, and small scale heavy metal remediation projects. They are often paired with pre-sedimentation filters and activated carbon filters to further clean the water, depending on discharge limits. A typical set up is shown below:



Separator - sedimentation/coarse filter: 1200 x 690 x 498 mm

Filter: 1200 x 690 x 800 mm with 300 liter absorber

Carbon filter: 600 x 1000 mm (barrel) with 150 liter carbon

Max flow: 1.5 m³/h

Recommended flow: 1.0 m³/h



NordTech Consulting & Trading Company, Norra torangsvägen 38, 612 42 Finsping - Sweden

Axon AMFI Mini:

Portable, Hand-held Oil/Water Separator and Contaminated Water Purification

Axon AMFI Mini is our newest mobile option. This filter requires 1 bag of Peat (8 Gallons) and can absorb up to 4 Gallons of petroleum. This filter is equipped with an oil alarm to let you know when the Peat is saturated and ready to be changed out. Various alarms can be installed to transmit via internal systems, SMS or GPRS. Many of our customers utilize these systems to empty water at transformer pits. This filter is designed for smaller areas of concern. Axon AMFI max flow rate is 250 GPH/ 4.1 GPM. Axon AMFI Mini suits most power companies or subcontractors. The smaller filters can be used on their own or as complement to the larger trailer versions.



NordTech Consulting & Trading Company, Norra torangsvagen 38, 612 42 Finsping - Sweden

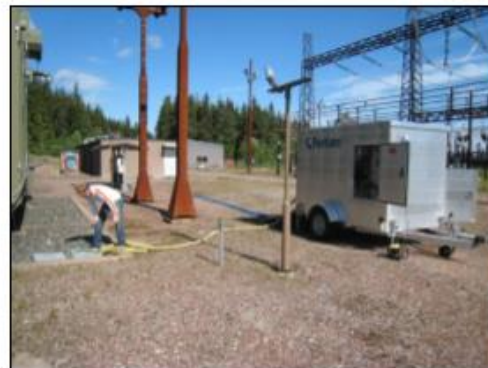
Axon Filter System AMBT:

Mobile Oil/Water Separator and Contaminated Water Purification with online Detection and Reporting

Axon AMBT is a mobile filter system with options for rigorous detection and documentation accessories based on the customer's needs. Axon AMBT has a gross weight of 1350 kg and can easily be moved between various sites with any hitch-equipped vehicle. It uses a Mass Flow Meter before filtration and measures pH, conductivity and turbidity after filtration. All is collected and stored in a PLC with Touch screen. Axon AMBT does not require observation during operation as it is equipped with a stop function that will stop operation and an alarm system will contact the operator when the containment area is empty or the filter is saturated. All information is saved and can easily be presented for both environmental authorities as well as customers. This system provides thorough diagnosis of the containment area and effluent water during the filtration process. Max flow rate= 1900 GPH.



Mobile Unit



Axon Filter Containers AMC:

Fully-Contained, Aboveground Oil/Water Separator and Contaminated Water Purification

The Axon AMC series of filters are fully-contained, insulated, heated and ventilated units designed for large capacity flow rates. These systems can be utilized near filling stations, transformer pits, and any other facility that requires the collection and filtration of oil, petroleum and metals from water. These units are designed for long-life usage and able to withstand weather elements.

Axon filter container - AMC 10

Length: 10 feet (3022 mm) Width: 8 feet (2438 mm)
Filter volume: 903.5 Gallons (3420 liter)
Filter width: 74.9 inches (1900 mm)
Filter length: 59.1 inches (1500 mm)
Number of filter cassettes: 4 + 2
Flow capacity filter: 4000 GPH (15 m³ / hour)
Flow capacity pipes: 4000 GPH (15 m³ / hour)
Inlet pipe: HDPE pipe Dim. 2.05 inches (52 mm)
Outlet pipe: HDPE pipe Dim. 4.34 inches (110 mm)
Volume Absorber: 348.71 Gallons (1320 liter)
Color: Standard White, Green, Blue, Grey
Insulation: 70 mm. Styrofoam walls, ceiling and floor
Wall covering: Aluminum / laminate
Floor covering: Aluminum
Lighting: Light fixture EX class
Heating: Electric heat element EX class
Ventilation: Electric fan EX class
Material: HDPE



Axon filter container - AMC 20

Length: 6045 mm
Width: 8 feet (2438 mm)
Filter width: 74.9 inches (1900 mm)
Filter length: 59.1 inches (1500 mm)
Number of cassettes: 4 + 2
Number of filters: 2
Filter volume: 2 x 3 420l.
Flow capacity filter: 7925 gallons / hour (2 x 15 m³/ hour)
Flow capacity pipes: 4000 GPH (15 m³ / hour)
Inlet pipe: HDPE pressure pipe dim. 2.05 inches (52 mm)
Outlet pipe: HDPE pressure pipe dim. 4.34 inches (110 mm)
Volume Absorber: 2 x 348.71 Gallons (2 x 1320 liter)
Color: Per agreement
Insulation: Walls, ceiling and floor: 70 mm Styrofoam
Interior covering ceiling, walls. Moisture-proof wood laminate
Floor: Aluminum
Lighting: Lighting fixture EX class
Heating: Electric heating element EX class
Ventilation: Electric fan EX class

